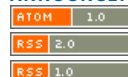


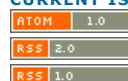


International Journal of Progressive Sciences and Technologies

ANNOUNCEMENTS



CURRENT ISSUE



Journal Help

USER

Username

Password

Remember me

JOURNAL CONTENT

Search

Search Scope

All

Browse

- [By Issue](#)
- [By Author](#)
- [By Title](#)

NOTIFICATIONS

- [View](#)
- [Subscribe](#)

FONT SIZE



INFORMATION

- [For Readers](#)
- [For Authors](#)
- [For Librarians](#)

KEYWORDS

Academic Achievement
Anopheles gambiae Benin
C-reactive protein,
polymorphism breast
cancer genotype
Competence
Covid-19
Development Effect
of Teaching Gender
Income Insecticides
Jigsaw Learning Biology
Lung Cancer PBL, PCDH9
Production Productivity
Quantitative Real-Time
PCR Method SARS-Cov-
2 Validity

HOME ABOUT LOGIN REGISTER SEARCH CURRENT
ARCHIVES ANNOUNCEMENTS CALL FOR REVIEWERS PAPER
SUBMISSION INDEXING & ABSTRACTING ##PUBLICATION FEES##

Home > Archives > **Vol 23, No 1 (2020)**

Vol 23, No 1 (2020)

Table of Contents

Articles

- [Psychological, Pedagogical and Methodological Basis of Formation of Conscious Reading in Primary School Students with Deficiencies in Intellectual Development](#) PDF 01-05
Xamraeva Iroda Sayfullaevna
- [To Enhance the Professional and Personal Approach of Students Speech Therapists in Education](#) PDF 06-08
Yodgorova Nafisa Sadridinovna
- [Use of Macros in VBA Programming Language in Power Point](#) PDF 09-15
Mirzaxmedova Nargiza Dilmurodovna
- [Biogas Producing Bacteria from Termites](#) PDF 16-21
Nermeen G. Abo-Elil, Hisham M. Elsheshtawy, Omar A. El-Shehaby, Yehia A. Osman
- [Test of Hortonian Laws Using Bivariate Relationship with Basin Morphometric Data of Udi-Agwu Questa Enugu State Nigeria – Remote Sensing and GIS Approach](#) PDF 22-41
Ejemeyowwi Ochuko
- [Improving Peak to Average Power Ratio of OFDM Signal Using DCT Precoding with Combined Distortion Techniques](#) PDF 42-48
Bonaventure Ekengwu, Nnaemeka Asiegbu, Chidiebere Muoghalu, Ifeoma Ezeanya
- [A Review on the Sustainability of Sugarcane Bagasse Ash as a Supplementary Cementitious Material](#) PDF 49-52
Pritish Gupta Quedou
- [Impact de la Covid-19 sur la Commercialisation de la Viande de Brousse : Perception des Commerçants de Brazzaville \(Congo\)](#) PDF 53-62
Gilles Freddy BAKOUE TILA MIALOUNDAMA, Phons Louis MABOUNDOU NTOUMBOU, Roger Albert MBETE, Noël Staley MABIALA MATOUMONA, Harley Bittson BITSINDOU KOKOLO, Ségolène SCHERELL MISSENGUE, Carnolin TSIANGANA BITEMO
- [Validity of Teaching Materials Based on Problem Based Learning Using Contextual Teaching and Learning Approach to Improve Critical Thinking](#) PDF 63-70
Yosa Aulya Putri, Yohandri Yohandri
- [Validity of teaching materials based on the inquiry based learning model with the CTL approach to improve students' creative thinking skills](#) PDF 71-78
Mona Trisna Cahyati, Yohandri Yohandri
- [Evaluation Participative de la Qualite des Ananas Produits avec Divers Types d'Engrais dans les Communes d'Allada et de Tori-Bossito](#) PDF 79-87
Gildas ZODOME, Arsène SALIFOU, Ibouiraïma YABI
- [Méthodes et pratiques en Education Relative à l'Environnement \(ERE\) à l'école primaire publique en Côte d'Ivoire : Une photographie des lieux](#) PDF 88-101
BRAFO Kouadio Koko, BROU Ahoissi Nicolas
- [The Effect of Risk Communication in Improving Farmers Independence in South Sumatera Province](#) PDF 102-108
Ali Alamsyah Kusumadinata, Sumardjo -, Dwi Sadono, Burhanuddin -
- [Symbolique de la Pandémie chez le Rural et Résilience](#) PDF

ISSN:2509-0119

ISSN-L: 2509-0119

ResearcherID: J-1399-2016



Impact Factor:

ICV = 80.38

SJIF = 5.616

IFSIJ = 7.625



Indexing & Abstracting



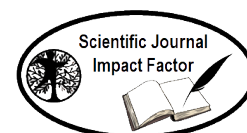
Psychologique : Etude Exploratoire sur l'Épuisement des Populations en Situation de la Pandémie au Nord du Togo Simliwa Pitala Amaëti	109-119
Updates of Uterine Fibroid Management Maged Naser, Mohamed MN, Lamia H. Shehata	PDF 120-129
Mobilité Durable : Analyse des Enjeux et Risques Lies à la Dynamisation du Transport dans le Complexe Lagunaire (Lac Nokoue-Lagune de Porto-Novo) au Bénin Michel Comlan SEDONOU, Alfred LICHEOU, Toussaint VIGNINO	PDF 130-138
Utilisation du Modèle GR4J pour la Simulation des Débits d'Etiage du Fleuve Mono (Bénin, Togo) à l'Exutoire d'Athiémé Coffi Justin NOUMON, Domiho Japhet KODJA, Naboua KOUHOUNDI, Sostelle HOUËSSOU, Ernest AMOUSSOU, Luc O. SINTONDJI, Expédit VISSIN, Euloge K. AGBOSSOU	PDF 139-144
Toward the Implementation of an Integrated Scientific Instructional Model on the Development of Students' Moral Character Sri Saparahayuningsih, Badeni Badeni	PDF 145-151
Production Agricole dans la Commune de Ze : Facteurs et Contraintes HOUËSSOU Akoëwanou Pierre, KISSIRA ABOUBAKAR, HOUNDI Pamphile, VIGNINO Toussaint	PDF 152-162
Diversité Floristique, Structure et Etat de la Flore des Forêts Galeries de la Zone de Confluence du Fleuve Ouémé et de la Rivière Okpara au Centre Bénin Loukmane MOUSSA, Tcha BoukpeSSI, Ismaïla Toko Imorou, Ibouaïma Yabi	PDF 163-176
Ambiances Bioclimatiques et Confort Touristique dans la Commune de So-Ava K.Olive ADISSODA, Ernest AMOUSSOU, W. Expédit VISSIN., N. P. Maximilien BOKO	PDF 177-185
Troubles Electrolytiques chez les Patients Atteints de Diabète Vivant à Bamako, Mali Soumaïla Konaté, Nouhoum Diarra, Togola Issiaka, Bakary Sacko	PDF 186-191
Indonesia's Role towards a Momentum of Cease-Fire in Afghanistan The Ulama Trilateral Meeting in Bogor Could Be the Foundation of the Negotiation for Intra Afghanistan Peace Arief Rachman	PDF 192-201
Analysis of the Needs of English Learning Models in Basic Schools Riskandi Riskandi, Hermawati Syarif, Nurhizrah Gistituati	PDF 202-206
Structural-Semantic, Communicative-Pragmatic Characteristics of the Hypotaxemes with if in English and its Uzbek Correspondences Mukhammadjon Abduvaliyev, Ahadjon Ataboyev, Abdulaziz Mattiyev	PDF 207-211
In vitro anti-plasmodial activity of crude extracts of Gardenia ternifolia, Pittosporum viridiflorum and Phytolaca dodecandra used for treatment of malaria in Kericho County, Kenya. Pacifica Chepchumba Bwogo	PDF 212-223
Kishor (Youth) Gang Culture: A Threat to the Erosion of Social Values Abdulla- Al-Mamun	PDF 224-229
Several Data of Infection in COVID-19 Patients during March-June 2020 at the First University Clinic of Tbilisi State Medical University, Georgia L. Ratiani, L. Gabunia, Sh. Khetsuriani, N. Gamkrelidze, E. Varazi	PDF 230-238
What it Means to Be a Monetarist Özlen Hiç	PDF 239-244
Negative Outcomes (Default, Loss to Follow-Up and Death) Among HIV-1 Mother-To-Child Infected Infants in the Gambia. What Are the Majors Associated Risk Factors? Musa Ceesay, Dr. Abdelkodosse Mohammed Hussen Abdulla, Mr Bakary Sanneh, Prof. Nani Nordin, Musa Ceesay	PDF 245-256
Recent Treatment Methods and their Efficacy for Corona Pandemic Situation Ayman Bin Mannan, Halima Habib	PDF 257-273
Influence of Problem Based Learning Model on the Students Critical Thinking Ability and Biology Competence of Senior High 3 Pariaman Ramadhan Sumarmin, Rani Basri	PDF 274-279
Analysis of the Implementation of Higher Order Thinking Skills and Literacy Of Junior High School Student Of Pekanbaru Sartika Tin Kartini, Ramadhan Sumarmin	PDF 280-283
Teaching Performance Assessment at Senior High School in Implementation of Teacher Competency Standards Tasrini Yenti, Ramadhan Sumarmin	PDF 284-289
An Overview of Spatio-Temporal Variability of Drought Intensity	PDF

RESEARCHERID

publons

INDEX
COPERNICUS

PKP|INDEX

CiteFactor
Academic Scientific Journals

TOGETHER WE REACH THE GOAL



Partners

and its Implications on Agricultural Production in Yola And Environs of Adamawa State, Nigeria	290-299
Abubakar Sadiq Abdulqadir, Maryam Abdullahi	
Media Discourse of Roots Causes and Security Perspectives on Climate Change	PDF 300-310
Munadhil Abdul Muqith, Valerii Leonidovich Muzykant, Rizky Ridho Pratomo, Refly Setiawan	
Internalization of Soft Skill Values in Basic Training Activities for Prospective Civil Servants	PDF 311-315
Wan Nasir	
Implementation of School Based Management in Improving the Quality of Education	PDF 316-323
Esianna Esianna, Bukman Lian, Artanti Puspita Sari	
The Influence of School Principal Supervision and School Committee Participation on the Quality of Junior High School Education	PDF 324-333
Wini Dwi Pahlawanti, Edi Harapan, Dessy Wardiah	
Forces et Faiblesses en Matière de Redevabilité dans le Secteur de l'Eau dans les Communes d'Ifangni et de Sakété (Bénin)	PDF 334-341
Reine BANKOLE, Sidonie HEDIBLE, Bernadin ELEGBEDE MANOU, Japhet KODJA, Luc KOUOLOU, Expédit VISSIN	
Implementation of Inspector Training System Certification Learning Based On E-Learning in Palembang Aviation Polytechnic	PDF 342-346
Virma Septiani, Direstu Amalia, Dwi Cahyono	
Functional Instructor Needs for Application of General Services Agency	PDF 347-352
Herlina Febiyanti, Sunda Ariana, Rabin Ibnu Zainal	
Teacher's Work Motivation of SMP Negeri 2 Banyuasin III	PDF 353-357
Ida Royani, Happy Fitria, Rohana Rohana	
Bio- Evaluation De La Qualité Des Eaux De Sources Par Les Protozoaires Intestinaux En Zone Equatoriale (Yaoundé, Cameroun)	PDF 358-368
Pierre TSOMENE NAMEKONG, Gideon AJEAGAH AGHAINDUM	
Optimisation du SIG et Analyse des Déterminants Socio-Economiques de la Production de l'Ananas dans le Département de l'Atlantique au Benin	PDF 369-381
Marcel Mahounan KOUASSI, Éric Alain Mahugnon TCHIBOZO, Apollinaire Cyriaque AGBON	
A Study of Consumers' Perception in Relation to Green Products in North Macedonia	PDF 382-389
Hasim Deari, Selam Isejni, Rametulla Ferati	
Characterization and Differentiation of some Clinical Isolates from Urine	PDF 390-396
Magda Mohamed Awad, Amro Mohamed Mowafy, Yehia A. Osman	
Design Of High Gain Low Noise Amplifier At Base Station Receiver VOR Equipment For Ground Check Monitoring As Learning Media In Civil Aviation Academy	PDF 397-402
Feti Fatonah, Muh Wildan, Sabdo Purnomo, Asep Muhamad Soleh	
The Power of Language and Speech in Movement: Speech Effects and its Classifications	PDF 403-406
Kurbanov Elbek Elmurodovich	
Statut Social de la Femme Rurale Adja de Dogbo au Benin	PDF 407-415
Abdoulaye BENON MONRA, Monique OUASSA KOUARO	
Prevalence of Urinary Schistosomiasis Among Primary School Pupils in Abuja Municipal Area Council Abuja, Nigeria	PDF 416-423
Okezie Gabriel Chidiebere, R.A.U. NWOBU, Mgbowula Goodness Ifeoma	
An Assessment of Bank Customers' intention to use internet banking: The Role of Service Quality	PDF 424-434
Vincent Ikechukwu Eke, Hassan Barau Singhry	
What it means to be a New Classical Economist	PDF 435-439
Özlen Hiç Hiç	
Technoversal Leader: Triumphant Leader of the Technological Era	PDF 440-446
Hakan Kapucu	
Caracteristiques Structurales des Populations des Espèces Ligneuses Alimentaires de la Forêt Classee d'Atcheriqbe (Commune de Djidja) au Benin (Afrique de l'Ouest)	PDF 447-458



Grégoire DJISSONON, Joseph Fanakpon DJEVI, Ibouaïma YABI

- [Study of Elements Released from Various Cooking Utensil After Heating on Cooking Utensil of Aluminum, Stainless Steel, Titanium-coated Stainless Steel and Teflon and Their Potential Health Hazards](#) [PDF](#)
459-467
Manogari Sianturi, Fajar L. Gultom, Faradiba Faradiba, Patricya V. Heumasse, Faris Febriza
- [The Cloud and Government Intervention within Cyberspace](#) [PDF](#)
468-472
Bogdan Nedelcu, Andreea Nedelcu, Alexandru Ioan Sgarciu
- [Relative Kinetic Stability Study of Hydronium, Zundel, and Eigen Cations through Quantum Mechanical Molecular Orbitals Approach](#) [PDF](#)
473-486
Anant Babu Marahatta
- [Updates in Neonatal Anemia and Thrombocytopenia: Causes, Risk Factors, and Management](#) [PDF](#)
487-494
Maged Naser, Mohamed MN, Lamia H. Shehata
- [Investment Feasibility of Jackfruit Dodol Stirrer Machine for The Household Industry](#) [PDF](#)
495-499
Ida Bagus Alit, I Gede Bawa Susana
- [The Relevance of Local Historical Events in Building National Identities: Identification in the History Learning Curriculum in Indonesia](#) [PDF](#)
500-504
Ridho Bayu Yefterson, Hendra Naldi, Erniwati Erniwati, Uun Lionar, Yelda Syafrina

What it means to be a New Classical Economist

Özlen Hiç

Istanbul University, Economics (in English) Department,
Istanbul-Turkey



Abstract – The New Classical School works with rational expectations and full flexibility of prices and wages in all markets. The concept of rational expectations hypothesis (REH) was first introduced by J.F. Muth (1961). Robert E.R. Lucas Jr. (1972) developed and popularized this hypothesis. Thomas Sargent, Neil Wallace, Robert Barro are other distinguished representatives of this school.

What is important in the New Classical School is first of all the assumption of full flexibility of prices and wages. As a result of this assumption, all markets will reach perfect equilibrium, economy will automatically settle at the point of full employment. Unemployment will be voluntary which will be denoted as “natural rate of unemployment”.

According to REH, on the other hand, all the economic agents have full knowledge and information about economic decisions – including government policies and their effects – and take into account their future expectations in a right way. In this case, the government policies which will be expected and known to everybody will be already taken into account and the decisions on prices and quantities are formed accordingly, thus prices are formed in a complex fashion. In this manner, efficiency of government policies neutralized. Hence, as much as Keynesian financial policies, monetarist monetary policies are ineffective as well. The only effective impact in economy seems to be “unexpected shocks” and accordingly “unexpected” or “shock”.

New Classical School have had weight after 70s due to inflationary effects of the Vietnam War and the stagflation following 1973-1974 oil shock. Hence the economic conservatism both during Regan era in the United States and Thatcher era in Britain effected the policy implementations for a while. However, it was not possible to prevent inflation; on the contrary, unemployment reached a new and higher dimension. Therefore, once more but this time with more cautious approach, a mix Keynesian and Monetarist policy implementation was adopted. On one hand, radical fiscal policies were implemented in order to prevent or decrease the budgetary gaps, on the other hand, monetary policies were applied for fine-tuning of economy, however this fine-tuning was not in the form of fixing money supply in the long run as recommended by the Monetarists. These policies were particularly based on the Keynesian analysis taken up in a broader perspective; that is to say, monetary policies being more effective in recession periods rather than fiscal policies.

Keywords – New Classical School; New Classical Macroeconomics, New Classical Assumptions, New Classical Policy Recommendations.

I. INTRODUCTION

During the ‘70s the New Classical School become widespread particularly between the younger generations at the time in academy circles. So much so that it was called the “Counter Revolution”. Note that many economist who lean towards Monetarism also called it the “Monetarist Counter Revolution”, but in fact, the counter revolution should be reserved for New Classicals which were more radical compared to Monetarism and more widespread. Also note that, although the discussion went on mostly within the

academic circles and many younger academicians became New Classical, still the practitioners of economics, consultants to firms, financial institutions etc. remained Keynesian during that time.

The New Classical economists, as will be explained shortly, were thoroughly conservative in their views and they were against any economic policy to be followed by the government. They all adhered to microeconomics and to macroeconomic theory and Walrasian equilibrium based on the assumption of the prevalence of perfect competition in

both the commodity and the labor markets. They also assumed that all economic agents had access to full information and could make accurate predictions or expectations. This is called “Rational Expectations (RE)”. Although the assumption of the RE and building economic models based on RE assumption was first pioneered by J.F. Muth, “RE and the Theory of Price Movements, *Econometrica*, July 1961”, this was taken up within a general macroeconomic model only during the early ‘70s by Robert E. Lucas, Jr.

Lucas was the pioneer in formulating the New Classical system and other notable New Classical were Thomas Sargent, Robert M. Townsend, Robert Barro, etc.

II. THE NEW CLASSICAL SCHOOL AND THE COUNTER-REVOLUTION OF THE ‘70S

There are several reasons why Keynesianism fell from grace during the 70’s while both Monetarism and particularly New Classical macroeconomic thought become in vogue.

As A Blinder, a notable New Keynesian economist, points out, the first reason was “the tumultuous economies of the ‘70s which witnessed the oil shock”. This had been preceded in the US by the adverse inflationary period caused by the Vietnam War which had given rise to both balance of payments (BOP) deficits and budgetary deficits. The evolving stagflation following the oil shock had played havoc with the Phillips Curve (PC), a powerful tool used by Keynesians. This was mistakenly taken as the proof that the Keynesian Macroeconomics was not valid, at least not in the Keynesian sense. M. Friedman explained it in terms of a vertical long-run (LR) PC is a succession of negatively sloping short-run (SR) PC’s. But the New Classical refuted the concept of PC all together.

A second reason why Keynesianism fell from grace and New Classical School become widespread concerns the question of “consistency of macroeconomic analysis with microeconomic foundations”. Indeed, the traditional microeconomics assumed perfect competition in all the markets and Walrasian Equilibrium. In contrast, any reference to microeconomic foundation of Keynes and Keynesians was not thorough and Keynesian macroeconomics was comprised of relationships between macro variables without going much deeper into how they are derived. In fact, as New Classical rightly pointed out, if we accept perfect competition in all markets and Walrasian equilibrium, this should lead us to perfect equilibrium in all the markets including the labor market and Keynesian less-than-full-employment equilibrium due to lack of effective demand should not arise. Therefore, as New Classical argued correctly that the Keynesian

macroeconomics lacked microeconomic foundations and was, in fact, inconsistent with the main body of traditional microeconomics based on perfect competition and Walrasian Equilibrium.

This is a theoretically correct criticism, but what is wrong with the argument of the New Classical is that perfect competition assumption is not a realistic assumption representing the modern economies. Therefore, the New Keynesians, who accepted the Keynesian unemployment (un-N) proposition and also accepted the criticism of the New Classical that Keynesian macroeconomics lacked microeconomic foundations, tried to lay down the micro foundations for Keynes, but not by accepting perfect competition and Walrasian equilibrium but by pointing out to diverse reasons of imperfect competition, inflexibility of wages and prices, lack of coordination between markets, etc...

The third reason why New Classical macroeconomics become vogue during the ‘70s, and particularly among the younger generation of academicians is its elegant mathematics which is not quite the case in the Keynesian macroeconomics. Furthermore, the new macroeconomic analysis of New Classical meant that those who accepted it, did not have to go back to all the old economic literature, but simply build on the new macroeconomic system.

It is interesting that, as noted above, the practitioners remained Keynesian even throughout the ‘70s because as A. Blinder points out, the Keynesian System still worked reasonably well for predicting where the economy goes, and for policy recommendations. This was why practitioners of economic profession did not want to go into all the theoretical discussions which had little predictive value (i.e. use) for them. In A. Blinder’s words, for the practitioners of the economic profession it was the case of “if it ain’t broke, don’t fix it”.

III. THE NEW CLASSICAL METHODOLOGY

The Basic Assumptions of the New Classical

The basic assumptions of the New Classical can be collected in two groups. The first is rational expectations, and the second is full flexibility of all prices and wages (born nominal and relative) in all the markets, and Walrasian equilibrium.

- *Rational Expectation Hypothesis*

According to New Classicals, all economic agents are rational, and they maximize, they make maximizing decision with full access to knowledge (information) which will enable them to make accurate predictions. At least, there should be no systematic errors in their decisions. This goes not only for entrepreneurs but also for workers. Keynes and Keynesians always maintained the idea that because of their position entrepreneurs make investment-, production- and employment decisions and have better aspect to information and can make accurate predictions about, say, future prices, and price expectations. But Keynesians believed this was not the case for workers who made systematic errors in underestimating future inflation.

This is not the case in traditional classical macroeconomics; neither in Neo-Classical Economics, and certainly neither in the New Classicals School. In fact, according to New Classicals, when making decisions, the economic agents not only try to predict accurately with access to full or adequate information but they also predict accurately what government policies would be pursued in future under the economic circumstances and hence they include the effects of those government policies in their predictions and estimates. This makes such policy measures to be followed by the government totally in effective.

Therefore, the New Classicals are skeptical not only about the policy recommendations of Keynesians as futile but also about the policy recommendation of Monetarists that we should have a money stock growing at a constant rate because these policies to be followed by the government would be completely incorporated into the expectations and estimates or predictions to be made by all the economic agents. Of course, the exception would be the implementation of a “shock policy” which is a policy to be implemented by the government which could not be predicted beforehand by the economic agents.

If we look at these assumptions deeper, we find out that New Classicals believe that all economic agents could have access to past time series and cross-sectional data and make accurate predictions and extrapolate the future course of events. This is termed “ergodicity” (in short, it means, history repeats itself), in addition to “universality” (which is valid for all economic agents). Note that under these circumstances, the entrepreneurs, for instance, can arrive to a set of probabilities and can make rational calculations about risk.

This is not the case in Keynes because according to Keynes, we cannot predict “future from past” data; there

would always be an element of “uncertainty” as opposed to “risk”; that is why investment is, in Keynes words, a psychological matter which can be explained by “animal spirits” and very much depends on the psychological estimates of entrepreneurs as to whether the future is going to be stable and growing or the reverse.

Of course, as the New Classicals would point out, not all the entrepreneurs would be capable of making accurate future predictions and estimates of risk, and those who won't be wiped out by the market eventually. And this is good for the economy because these entrepreneurs are unproductive and inefficient. Thus, we may see this event of “elimination of the inefficient entrepreneurs” as a social Darwinism.

Still another assumption of the New Classicals is that as in microeconomic analysis they take up a typical maximizing agent - be it the entrepreneur, the worker, the consumer or the saver- and they analyze this typical agent and his equilibrium and then all the macroeconomic parameters are derived simply by a mere aggregation or summation of the equilibria of this representative agent.

- *Perfect Competition in All Markets and Full-Flexibility of Prices and Wages*

The second major assumption of New Classicals was the acceptance of perfect competition in all the commodity and labor markets and full flexibility of nominal prices and wages implying full downward-movement in a simultaneous and immediate fashion as implied in the Walrasian Equilibrium by the auctioneer of the prices and wages. The Walrasian Equilibrium system leads to perfect equilibrium in all the commodity and labor markets. This means that there would be no excess supply or demand for any commodity. This is valid for the labor market as well which means that for the labor market, the equilibrium would be automatic at that income level which would give us the natural-rate-of-unemployment (n_{ru}). Note that New Classicals have accepted the n_{ru} -concept first pioneered by Friedman in their analysis and assert that automatic equilibrium of the labor market would be at such a point instead of the concept full-N equilibrium that we encounter in the Traditional and the Neo-Classicals Systems. In such a case of perfect equilibrium in all markets and automatic equilibrium at n_{ru} , there is no scope for un-N due to lack of effective demand, so the Keynesian conclusion is simply inconsistent and will not hold under the traditional micro assumptions of perfect competition in all markets as accepted by the New Classicals.

In fact, while Friedman argues that the economy would arrive at n_{ru} and y_{nru} with a lag due to adaptive expectations,

according to the New Classicals, the economy will come to equilibrium at nru immediately. Thus, while Say's Law and neutrality of money will hold only in the long run in Monetarism, in the New Classical School, neutrality of money and Say's Law will hold immediately.

In this respect and also in the argument that no policy implementation is going to be effective, New Classicals are more radical than Monetarists and they contradict Monetarists as well as Keynesians.

The Significance of These Assumption

As an important analytical question here is:

Which assumption is a more crucial assumption that leads to the conclusion of perfect equilibrium (i.e., equilibrium at nru)? The REH or full flexibility of wages and prices and Walrasian Equilibrium.

This question has been answered by New Keynesians. For many New Keynesians like Stanley Fischer, John Taylor, etc., constructed models which retained the RE hypothesis but worked with the assumption of inflexible prices and wages and imperfect competition. The result was, under these

assumptions we would still have Keynesian less-than-full-N equilibrium or un-N due to lack of effective demand and hence, under these conditions, Keynesian policy recommendations were even more effective. Thus, in short, full flexibility of prices and wages and Walrasian equilibrium is the more critical assumption compared to REH in leading the New Classical macroeconomics to automatic perfect equilibrium at nru .

This is presumably one reason why most of the New Keynesians were willing to accept and work with REH but concentrate on various reasons of lapses from perfect competition or various forms of imperfect competition or lack of coordination between markets.

The Equilibrium in the New Classicals

We may visualize the equilibrium in the New Classical School by means of AD and AS Curves with the aid of the diagram below. We owe this diagram to Arjo Klammer, "The New Classical Macroeconomics, Conversations with the New Classical Economists and their Opponents, 1984".

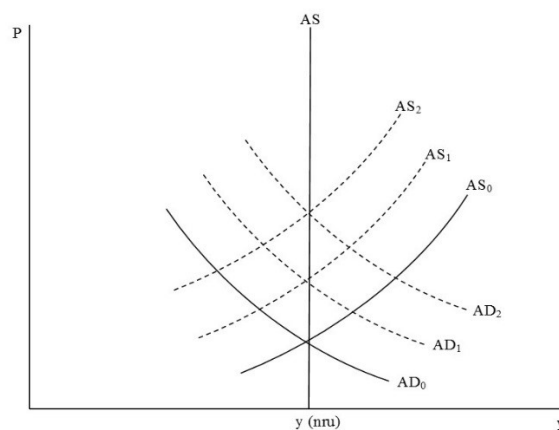


Fig. 1.

Explanation of the Business Fluctuations by the New Classicals

There are two different reasons were offered by New Classicals to explain business cycles, that is, the presence of un-N met in certain years.

One explanation was offered by Lucas who explained the presence of business fluctuations with SR deviations from REH and accurate predictions on the part of economic agents.

The second explanation is more radical. It explains business cycles still as Pareto optimal adjustments to the adverse effects on the economy of technological changes, by T. Sargent.

IV. CONCLUSION

A. Blinder, when giving out the reasons why Keynesianism fell from grace and New Classical School and Monetarism become wide-spread during the '70s, pointed out that an important factor was rising economic conservatism during these years. In general, politicians, intellectuals and

masses of people had become more conservative during the '70s in the US compared to the decades '50s and '60s. Thus, they supported any theory that was basically conservative compared to Keynes, this was an important reason why, for instance, although Monetarism was first formulated during the '50s and '60s, it became wide spread only during the 70's and was basically implemented in the US by R. Reagan and in UK by M. Thatcher. But the results of this implementation were adverse, and Monetarism seized to be implemented after a brief period.

There was of course, no way of policy implementation of the New Classics School, except that any lessening of government intervention can be interpreted as an indirect result of New Classics. The only problem here is that a small government and balanced budget is not only recommended by Monetarists as well. But given the prevailing conditions in our time Keynesians and New Keynesians may also advocate similar measures stemming however, from basically Keynesian macroeconomic system.

REFERENCES

- [1] Ando and Kennickell, "Failure of Keynesian Economics and 'Direct' Effects of Money Supply: A Fact or a Fiction," University of Pennsylvania, mimeo, 1985.
- [2] Arestis, *The Post-Keynesian Approach to Economics: An Alternative Analysis of Economic Theory and Policy*.
- [3] Barro and King, "Time-Seperable Preferences and Inter-Temporal Substitution Models of Business Cycles," *QJE*, Nov. 1984.
- [4] Barro and Rush, Rush, "Unanticipated Money Growth and Unemployment in the United States," *AER*, March 1977.
- [5] Barro, "The Equilibrium Approach to Business Cycles," Money, Expectations and Business Cycles: Essays in Macroeconomics, Robert J. Barro ed.
- [6] Barro, *Money Expectations and Business Cycles: Essays in Macroeconomics*, New York: Academic Press, 1981.
- [7] Blinder, "The Fall and Rise of Keynesian Economics," *Economic Record*, Vol. 64, No. 187, Dec. 1988.
- [8] Davidson, "Controversies in Post-Keynesian Economics," Aldershot, Hants: Edward Elgar Publishing Ltd., 1991.
- [9] Davidson, *Controversies in Post-Keynesian Economics*.
- [10] Davidson, *Post-Keynesian Macroeconomic Theory: A Foundation for Successful Economic Policies for the 21st. Century*, Aldershot, Hants: Edward Elgar Publishing Ltd., 1994. Edward Prescott, "Theory Ahead of Business Cycle Measurement," *Carnegie-Rochester Conference Series on Public Policy*, Fall 1986.
- [11] Fischer, "Long-term Contracts, Rational Expectations and the Optimal Money Supply Rule," *JPE*, Vol. 85, No. 1, Feb. 1977, pp. 191-205.
- [12] Friedman, Benjamin, "Recent Perspectives on Macroeconomics," NBER Working Paper, No. 1208, 1983.
- [13] Gordon, "Wage Price Controls and the Shifting Phillips Curve," *Brookings Papers on Economic Activity*, 1972.
- [14] Klammer, *The New Classical Macroeconomics*,
- [15] Long and Plosser, "Real Business Cycles," *JPE*, Feb. 1983.
- [16] Lovell, "Tests of Rational Expectations Hypothesis," *AER*, March 1986, pp. 110-124.
- [17] Lucas and Rapping, "Real Wages, Employment and Inflation," *JPE*, Sept. 1969.
- [18] Lucas and Sargent "After Keynesian Macroeconomics," *After the Phillips Curve: Persistence of High Inflation and High Unemployment*.
- [19] Lucas, "Expectations and the Neutrality of Money," *Journal of Economic Theory*, No. 4, April 1972.
- [20] Lucas, "International Evidence on Output-Inflation Trade-offs," *AER*, No. 63, June 1973, pp. 326-334; "Expectations and the Neutrality of Money".
- [21] Lucas, "Price Expectations and the Phillips Curve," *AER*, June 1970.
- [22] Lucas, *Models of Business Cycles*, Oxford: Blackwell, 1987.
- [23] Muth, "Optional Properties of Exponentially Weighted Forecasts," *Journal of the American Statistical Association*, No. 55, 1960.
- [24] Muth, "Rational Expectations and the Theory of Price Movements," *Econometrica*, July 1961.
- [25] Rotemberg, "Interprting Some Statistical Failures of Some Rational Expectations Macroeconomic Models," *AER*, No. 74, 1984.
- [26] Sargent, "Estimation of Dynamic Labor Schedules under Rational Expectations," *JPE*, Dec. 1978.
- [27] Sargent, "Rational Expectations and the Theory of Economic Policy," *Journal of Monetary Economics*, April 1976.
- [28] Sargent, *Dynamic Macroeconomic Theory*, Boston: Harvard University Press, 1976.
- [29] Solow, "Comments from Inside Economics," *The Consequences of Economic Rhetoric*, Donald N. McClosley, Arjo Klammer and Robert M. Solow ed., Cambridge: Cambridge University Press, 1988.
- [30] Taylor, "Aggregate Dynamics and Staggered Contracts," *JPE*, Vol. 88, No. 1, Feb. 1980.